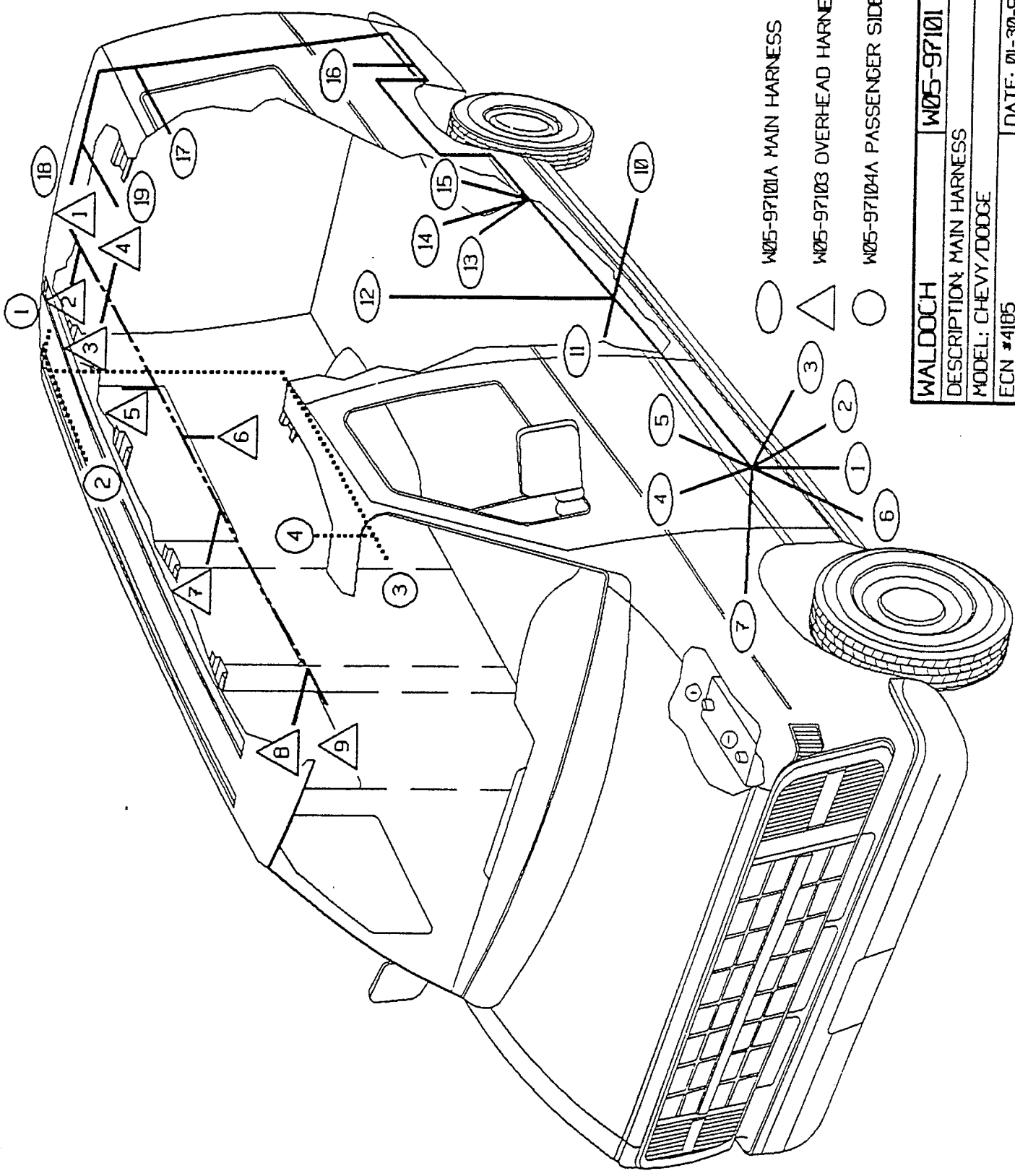


1997

PANELTRONICS
WIRING SCHEMATICS



W05-97101A MAIN HARNESS

W05-97103 OVERHEAD HARNESS

W05-97104A PASSENGER SIDE HARNESS



WALDOCH	W05-97101 A
DESCRIPTION: MAIN HARNESS	
MODEL: CHEVY/DODGE	
ECN #4185	DATE: 01-30-97
DRAWN BY: M. RIPPLINGER	CHECKED BY:
WIRF DESIGN INC	

A) WIRE TO BE TEW
W. OLERANCE: +2", -1/2"

DVR HEADPHONE
MOLEX #03-06-1122

- (1) ACC. OUTPUT
AMP #640536-1
1-20G BRN
2-20G PUR
3-18G YEL/RED
4-18G PNK
5-BLANK
6-BLANK
SOK #350536-1

- (3) ACC. OUTPUT
AMP #640536-1
1-14G RED
2-BLANK
3-18G RED/BLU
4-14G RED A (SEE BLOCKING)
5-16G RED/BLU A (SEE BLOCKING)
6-14G TAN B (SEE BLOCKING)
7-18G TAN
8-16G TAN A (SEE BLOCKING)
SOK #350536-1 (14G)
SOK #350536-1 (16-20G)

- (5) SIDE RADIO
18G BLK
18G PNK
20G BLU
20G GRN
20G BLK/WHT
REDBUTT

- (7) DVR FRONT IND.
(FLOOR)
18G YEL/RED
18G BLK
250 ING. FEM.
1520183-21

- (9) DVR FRONT IND.
18G YEL/RED
18G BLK
250 ING. FEM.
1520183-21

- (2) CTSY. OUTPUT
AMP #490704-0
1-18G ORG/BLK
2-BLANK
SOK #350536-1

- (4) TAP TO TV
AMP #490704-0
1-18G BLK
2-18G ORG/BLK
3-18G PNK
4-20G WHT
5-20G GRY
6-20G ORG
SOK #350536-1

- (4A) TAP TO FT. AVE
AMP #490704-0
1-18G ORG/BLK
2-18G TAN
3-16G BLK
SOK #350536-1

- (6) MAIN GROUND
16G BLK
16G BLK A
#10 STAR RING
(61795-3)

SHIP WITH SUB-HARNESSES
97103, 98104 AND 98137
CONNECTED TO THIS HARNES

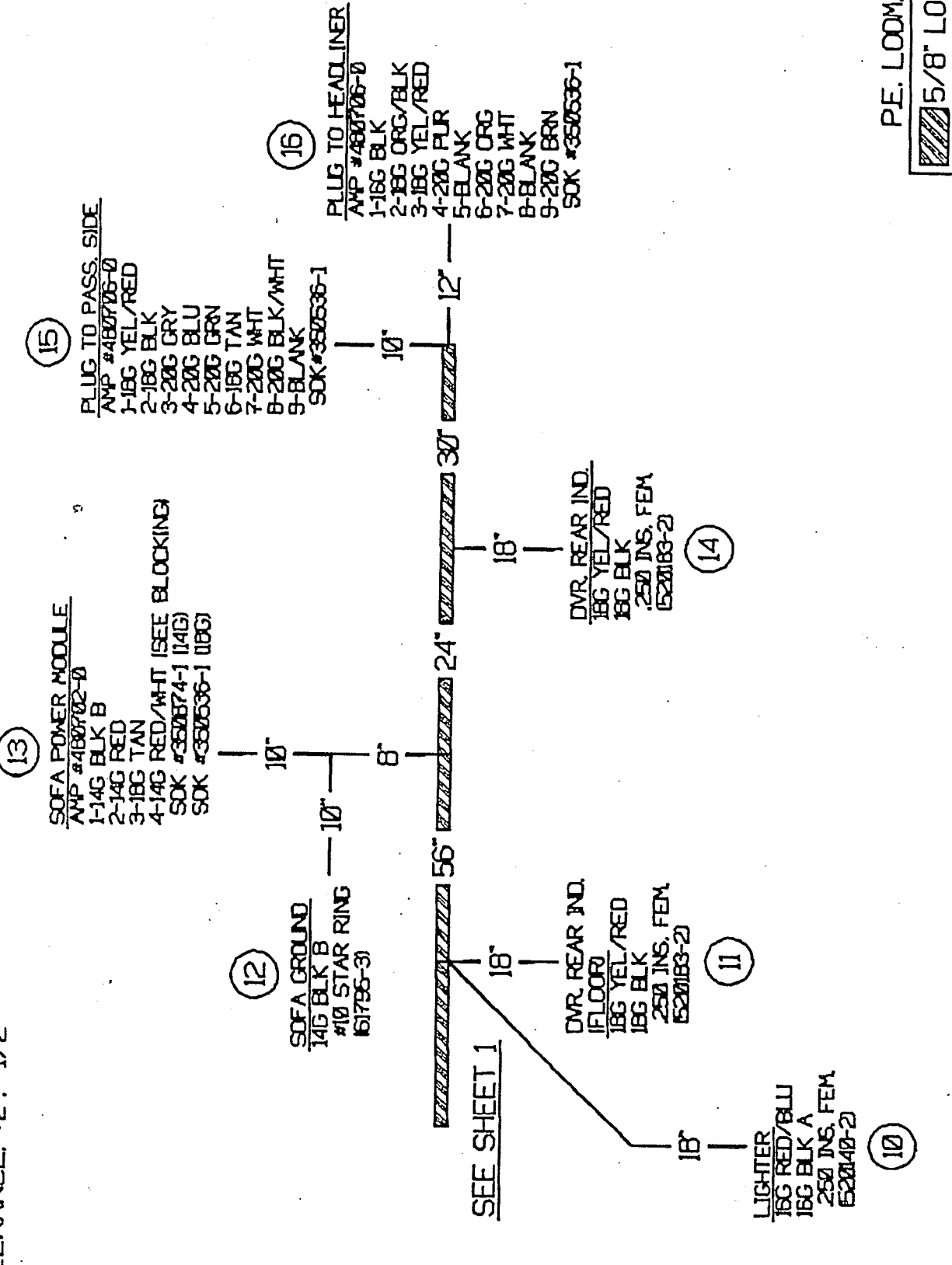
PE. LOOM



SEE SHEET 2

I HEREBY APPROVE THIS DRAWING FOR FABRICATION		L		WALDOCH		W05-98101 A	
SIGNED:		R		DESCRIPTION: MAIN HARNES			
DATE:		B		MODEL: SYSTEM 3000			
		T		ECN #6831		DATE: 10-30-97	
		SP		DRAWN BY: M. RUPPLINGER		CHECKED BY:	
		M		REVISIONS		WIRE DESIGN, INC.	

WIRE TO BE TEW
 WU TOLERANCE: +2', -1/2"



10

11

12

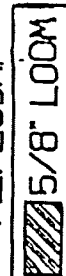
13

14

15

16

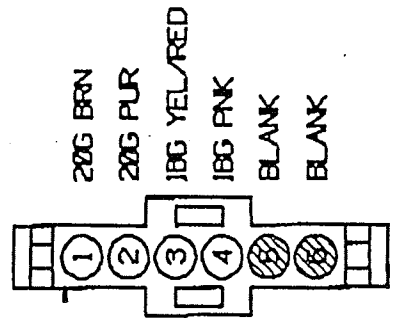
PE. LOOM



I HEREBY APPROVE THIS DRAWING FOR FABRICATION		WALDOCH		W05-98101 A	
SIGNED:		DESCRIPTION: MAIN HARNESS		DATE: 10-30-97	
DATE:		MODEL: SYSTEM 3000		CHECKED BY:	
REV. A		ECN #6631		DATE: 10-30-97	
REV. B		DATE		DRAWN BY: M. RIPLINGER	
REV. C		EON #		DATE	
REV. D		DATE		DATE	
REV. E		DATE		DATE	
REV. F		DATE		DATE	
REV. G		DATE		DATE	
REV. H		DATE		DATE	
REV. I		DATE		DATE	
REV. J		DATE		DATE	
REV. K		DATE		DATE	
REV. L		DATE		DATE	
REV. M		DATE		DATE	
REV. N		DATE		DATE	
REV. O		DATE		DATE	
REV. P		DATE		DATE	
REV. Q		DATE		DATE	
REV. R		DATE		DATE	
REV. S		DATE		DATE	
REV. T		DATE		DATE	
REV. U		DATE		DATE	
REV. V		DATE		DATE	
REV. W		DATE		DATE	
REV. X		DATE		DATE	
REV. Y		DATE		DATE	
REV. Z		DATE		DATE	

WIRE TO BE TIEW

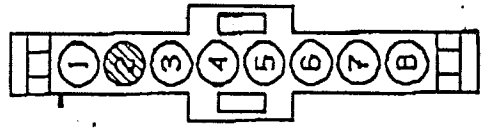
POINT 1



- 20G BRN
- 20G PUR
- 18G YEL/RED
- 18G PNK
- BLANK
- BLANK

AMP #1-640585-1
SOK #350536-1

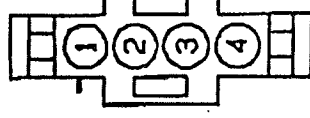
POINT 3



- 14G RED
- BLANK
- 16G RED/BLU
- 14G RED A
- 16G RED/BLU A
- 14G TAN B
- 18G TAN
- 16G TAN A

AMP #1-640586-1
SOK #350536-1 (20-16G)
SOK #350574-1 (14G)

POINT 13



- 14G BLK B
- 14G RED
- 18G TAN
- 14G RED/WHT

AMP #1-480702-0
SOK #350536-1 (18G)
SOK #350574-1 (14G)

NOTE:

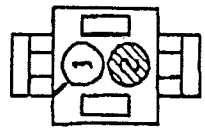
FROM MAIN HARNESS

AUXILIARY FEEDS

- 14G RED A (CONSTANT)
- 16G RED/BLU A (CONSTANT)
- 14G TAN B (IGNITION)
- 16G TAN A (IGNITION)
- BLUEBUTT

12"

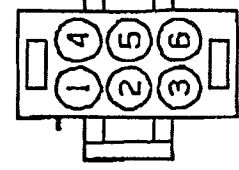
POINT 2



- 18G ORG/BLK
- BLANK

AMP #1-480698-0
SOK #350536-1

POINT 4



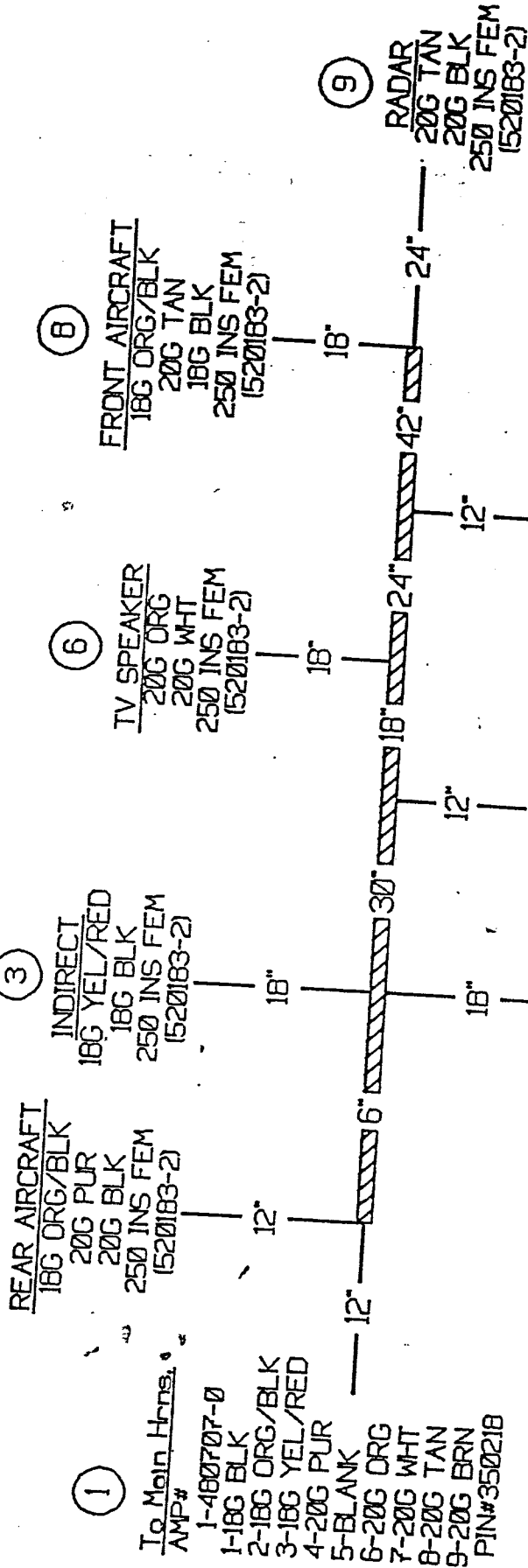
- 18G BLK
- 18G ORG/BLK
- 18G PNK
- 20G WHT
- 20G GRY
- 20G ORG

AMP #1-480704-0
SOK #350536-1

I HEREBY APPROVE THIS DRAWING FOR FABRICATION		L		WALDOCH		W25-98101 A	
SIGNED:		R		DESCRIPTION: MAIN HARNESS			
DATE:		A 7143 03-16-98		MODEL: SYSTEM 3000			
		1998 6831 10-30-97		ECN #6831		DATE: 10-30-97	
		REV. ECN # DATE		DRAWN BY: M. RIPPLINGER		CHECKED BY:	
		REVISIONS		M		WIRE DESIGN, INC.	

ALL WIRE BE TFW

1 OF 1



3/8" P.E. LOOM

SHIP CONNECTED TO 97101

L	WALDOCH	8/103
R	DESCRIPTION: OVER-HEAD HARNESS	W05-97103
B	MODEL: CHEVY/DODGE	Un:Verse1
T	ECN #6070	DATE: 10-25-96
SP	DRAWN BY: J. DILLMAN	CHECKED BY:
M	REVISIONS	

HEREBY APPROVE THIS DRAWING FOR FABRICATION

SIGNED: *[Signature]*

DATE: 10/26/00

AMP #1-480707-0
 PIN #350218-1 (20-14G)

