

00-3403 REAR/MID HARNESS

"P4" CONNECTOR

- 16GA. PURPLE "PWR-POINT2"
- 16GA. BLUE "PR-LT-PWR2"
- 16GA. WHITE "CTSY-LT"
- 16GA. BLUE "BLUE-LT"
- 16GA. WHITE "OEM-DOME"
- 16GA. ORANGE "AUX-PWR-3"
- 10GA. RED "SOFA-3"
- 10GA. RED "SOFA-4"
- 10GA. BLACK "SOFA-GND-1"
- 10GA. BLACK "SOFA-GND-2"
- 16GA. BROWN "BACK-LT-3"
- 16GA. RED "USB-PWR-3"

INTERFACES WITH
00-3402
DRIVER SIDE FRONT HARNESS

"P5" CONNECTOR

- 16GA. RED "SHADE-PWR2"
- 14GA. BLACK "GND-1"
- 14GA. BLACK "GND-2"
- 14GA. BLACK "GND-3"
- 16GA. PINK "SHD-2-UP"
- 16GA. BLUE "SHD-2-DWN"

INTERFACES WITH
00-3402
DRIVER SIDE FRONT HARNESS

LEAD #1

- 16GA. ORANGE "DSM-PR-LT"
- 16GA. BLACK "MID-LT-GND"

LEAD #2

- 16GA. PINK "SHD-3-UP"
- 16GA. BLUE "SHD-3-DWN"

LEAD #3

- 16GA. ORANGE "DSR-PR-LT"
- 16GA. BLACK "DSR-LT-GND"

LEAD #4

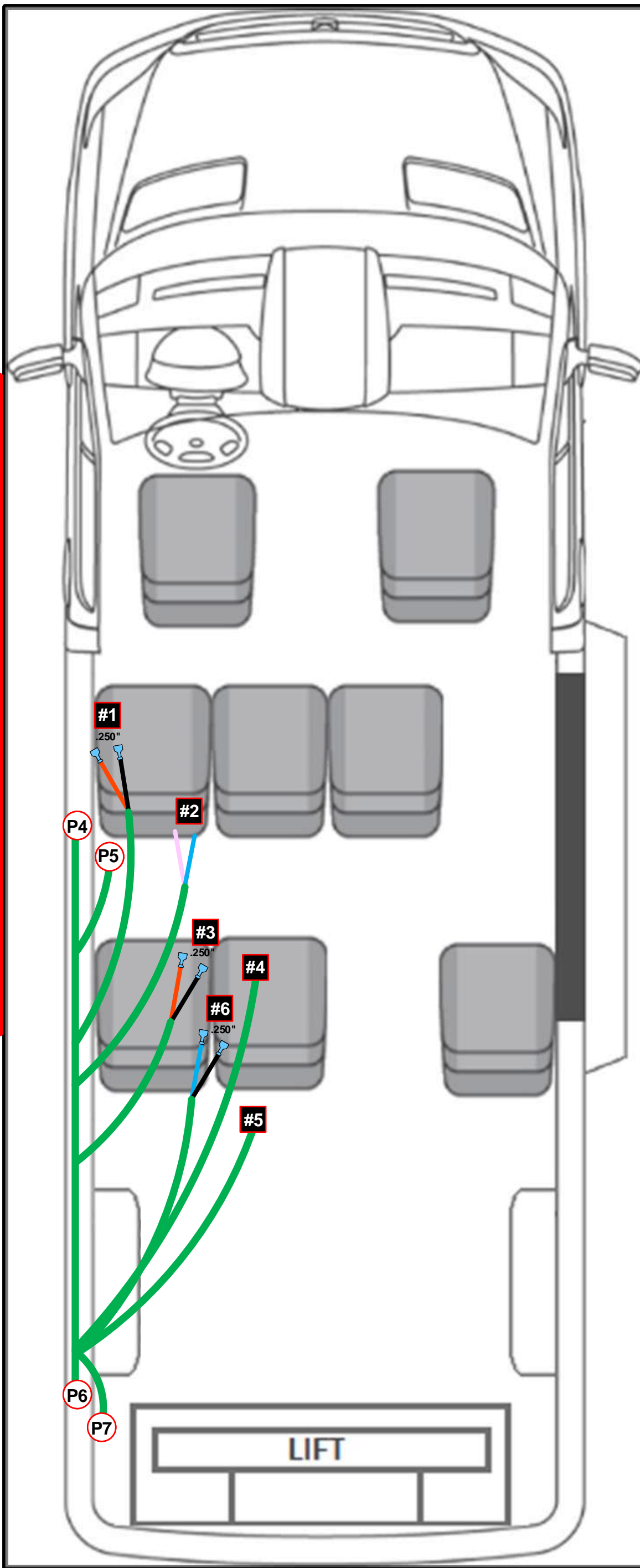
DRIVER SIDE MID PANEL WIRES

- WIRE BUNDLE #1
- 16GA. ORANGE "DSM-PR-LT2"
 - 16GA. BLACK "DSM-GND-1"
 - 16GA. BLACK "PER-GND2"
 - 16GA. BLUE "PR-LT-PWR3"
 - 16GA. ORANGE "DSM-PR-LT1"

- WIRE BUNDLE #2
- 16GA. BLACK "AUX-GND-4"
 - 16GA. ORANGE "AUX-PWR-4"
 - 16GA. BLACK "USB-GND-3"
 - 16GA. RED "USB-PWR-3"

- WIRE BUNDLE #3 (SHADE SW)
- 16GA. RED "SHADE-PWR3"
 - 16GA. BLUE "SHD-2-DWN"
 - 16GA. BLUE "SHD-2A-DWN"
 - 16GA. PINK "SHD-2-UP"
 - 16GA. PINK "SHD-2A-UP"
 - 16GA. BLACK "SHADE-GND3"
 - 16GA. BLACK "SHD-GND3A"
 - 16GA. BLACK "SHD-GND3B"
 - 16GA. BROWN "BACK-LT-4"
 - 16GA. BROWN "BACK-LT-4A"

APPROXIMATE HARNESS CONNECTION LOCATIONS



SEE SECOND
PAGE FOR
CONNECTOR
PINOUTS

= LEAD

LEAD #5

DRIVER SIDE REAR PANEL WIRES

- WIRE BUNDLE #1
- 16GA. ORANGE "DSR-PR-LT1"
 - 16GA. BLACK "DSR-PR-GND"
 - 16GA. BLACK "PER-GND3"
 - 16GA. BLUE "PR-LT-PWR4"
 - 16GA. ORANGE "DSR-PR-LT2"

- WIRE BUNDLE #2
- 16GA. BLACK "AUX-GND5"
 - 16GA. ORANGE "AUX-PWR5"
 - 16GA. BLACK "USB-GND-4"
 - 16GA. RED "USB-PWR-4"

- WIRE BUNDLE #3 (SHADE SW)
- 16GA. RED "SHADE-PWR4"
 - 16GA. BLUE "SHD-3-DWN"
 - 16GA. BLUE "SHD-3A-DWN"
 - 16GA. PINK "SHD-3-UP"
 - 16GA. PINK "SHD-3A-UP"
 - 16GA. BLACK "SHADE-GND4"
 - 16GA. BLACK "SHD-GND4A"
 - 16GA. BLACK "SHD-GND4B"
 - 16GA. BROWN "BACK-LT-5"
 - 16GA. BROWN "BACK-LT-5A"

"P6" CONNECTOR

- 16GA. PURPLE "PWR-POINT"
- 16GA. BLUE "PR-LT-PWR5"
- 16GA. WHITE "CTSY-LT"
- 16GA. BLUE "BLUE-LTS-1"
- 16GA. WHITE "OEM-DOME"
- 16GA. ORANGE "AUX-PWR-6"
- 10GA. RED "SOFA-5"
- 10GA. RED "SOFA-6"
- 10GA. BLACK "SOFA-GND-3"
- 10GA. BLACK "SOFA-GND-4"
- 16GA. BROWN "BACK-LT-6"
- 16GA. RED "USB-PWR-5"

INTERFACES WITH
00-3404
PASSENGER SIDE HARNESS

LEAD #6

- 16GA. BLUE "CUP-LIGHT"
- 16GA. BLACK "CUP-GND"

"P7" CONNECTOR

- 14GA. BLACK "GND-4"
- 14GA. BLACK "GND-5"
- 14GA. BLACK "GND-6"
- 16GA. RED "SHADE-PWR5"

INTERFACES WITH
00-3404
PASSENGER SIDE HARNESS



NOTES: All Dimensions are in Inches

MNSTAR Technologies Inc. claims all proprietary rights to this drawing and the information it contains. This material is confidential, disclosure, reproduction and manufacturing is strictly prohibited without the express written permission of MNSTAR Technologies Inc. All rights of design or invention are reserved.

Material:

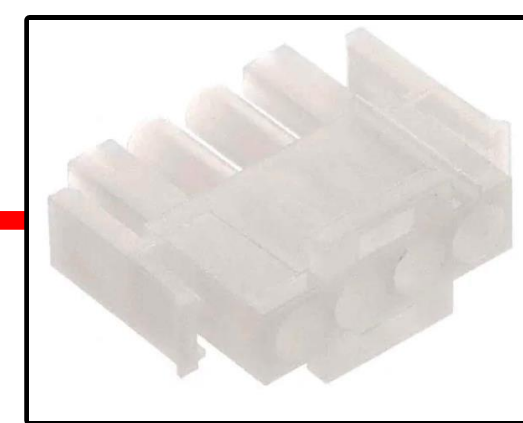
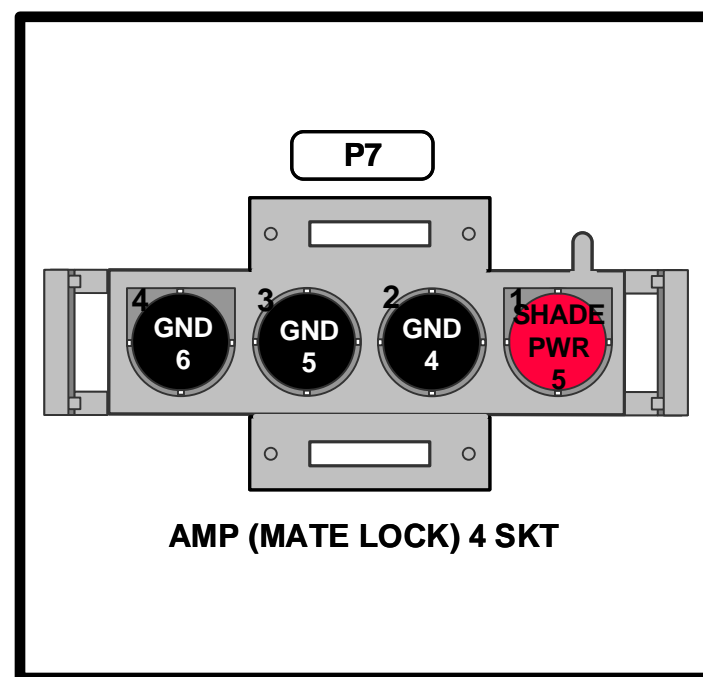
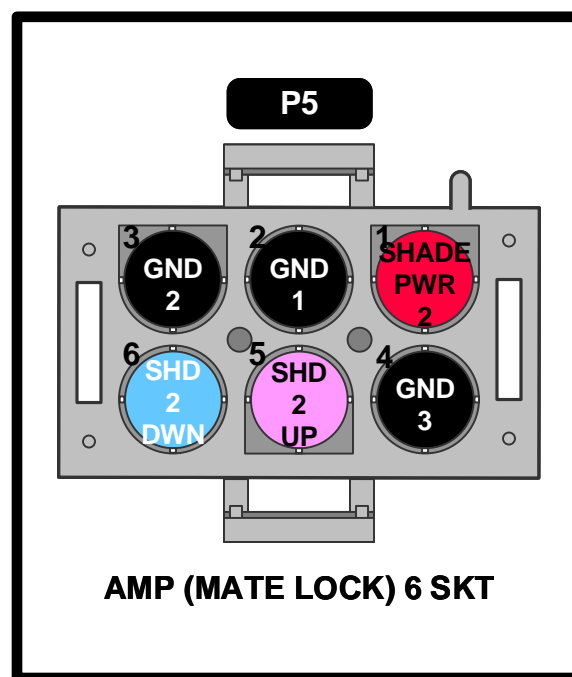
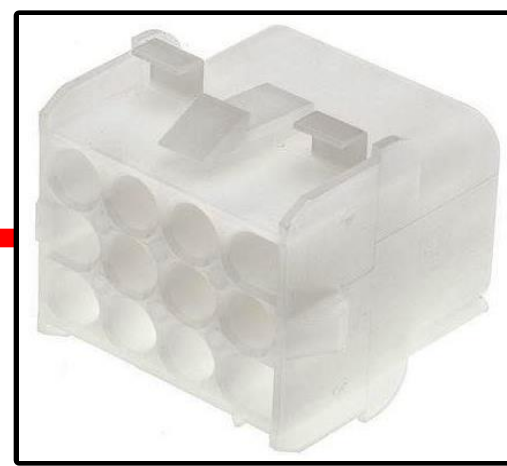
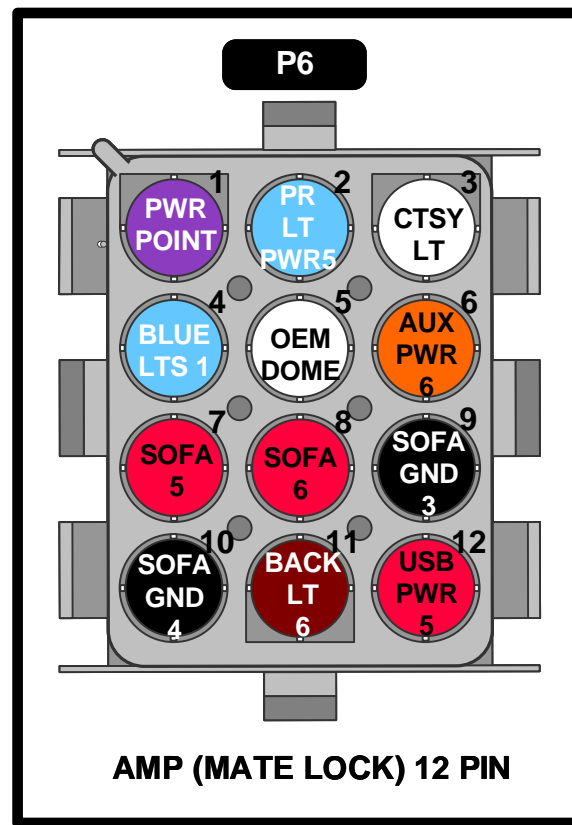
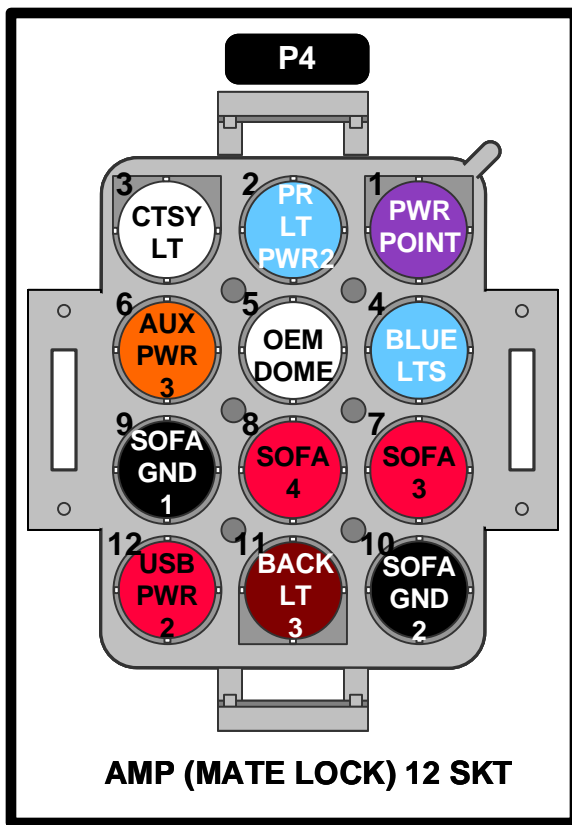
TITLE 00-3403 REAR/MID HARNESS SCHEMATIC

DESCRIPTION

FILENAME

SCALE

DRAWN BY



NOTES: All Dimensions are in Inches

MNSTAR Technologies Inc. claims all proprietary rights to this drawing and the information it contains. This material is confidential, disclosure, reproduction and manufacturing is strictly prohibited without the express written permission of MNSTAR Technologies Inc. All rights of design or invention are reserved.

Material:	TITLE	DESCRIPTION
	FILENAME	SCALE DRAWN BY